

# S2G Data Viewer

## v2.7.1

### Release Notes

The screenshot displays the S2G Data Viewer interface with the following components:

- Product Files:** A table listing files such as 'S3A\_TEST\_SLSTR\_ISP\_SORTED\_BY\_API\_904937 bytes' and 'S3A\_TEST\_OLCI\_ISP\_SORTED\_BY\_SSC.11007460 bytes'.
- ISP List:** A table with columns for #, Type, Offset, I, SSC, APID, and Time\_Code\_Field, listing various ISP entries.
- ISP Fields:** A hierarchical tree view of packet fields including Packet\_Primary\_Header, Packet\_Sequence\_Ctrl, Packet\_Data\_Field, and PUS\_Header.
- Hexadecimal View:** A hex dump of the selected packet data with corresponding ASCII characters.

### What's new

This release implements the following changes with respect to S2G v2.7.0 released on 27 May 2024:

### New Features

- Support CFDP in S2G - Parsing and visualization of PDUs - Completion Map (S2G-AN-266)



- After use, transaction ID panel remains in focus after closing and reopening the application (S2G-AN-293)

## Software Aspects

- No updates to underlying software libraries in this release

## Bug Fixes

- Issues with v2.7.0. macOS M1/M2 installation package without Java Runtime Environment (S2G-AN-291)

## Documentation

- User Manual updated to describe support to CFDP

## Available Platforms

S2G is available for Linux 64-bit, macOS and Windows 64-bit.

For each platform, two types of packages are provided: one with the Java Runtime Environment (JRE) embedded in the bundle and one without. Having the JRE included ensures that the application works even if no Java version is installed in your system. The version of the JRE embedded is OpenJDK 11.0.15.

	Distribution Package
Linux 64-bit	s2g-linux.gtk.x86_64.zip
Linux 64-bit with JRE 8 embedded	s2g-linux.gtk.x86_64.withJRE.zip
macOS	s2g-macosx.cocoa.x86_64.dmg
macOS with JRE 8 embedded	s2g-macosx.cocoa.x86_64.withJRE.dmg
Windows 64-bit	s2g-win32.win32.x86_64.zip
Windows 64-bit with JRE 8 embedded	s2g-win32.win32.x86_64.withJRE.zip

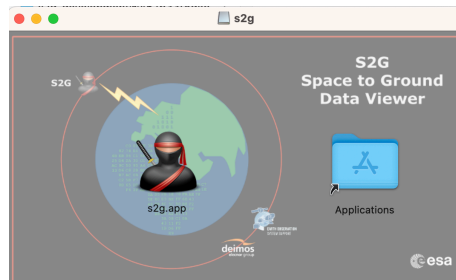
Note: For macOS package (no embedded JRE), it is required to have JDK 11 installed. For Linux/Windows packages with no embedded JRE, having JRE 11 is sufficient.



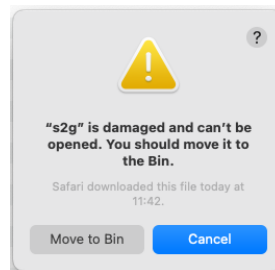
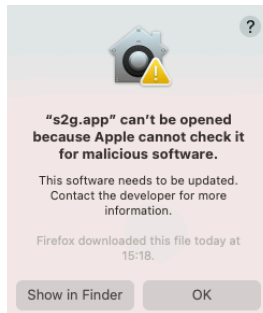
## Installation Hints

For macOS, the following steps may have to be followed to circumvent user permission and security issues:

1. The *s2g.app* can be either copied to Applications folder (if user has admin rights) or copied to any user folder



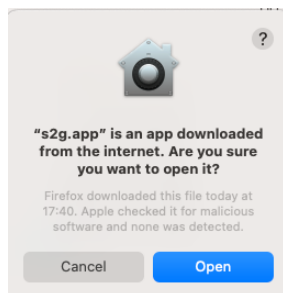
2. If launching the application results in an error message, e.g

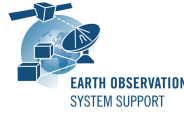


type the following command on the Terminal window (after navigating to the folder where *s2g.app* is located):

```
xattr -d com.apple.quarantine s2g.app
```

3. Normally, launching the application will show the following message window, click Open





## Mission Support

The S2G distribution package includes mission configuration files (JAR archive containing XML file and schema files) for the following missions:

- Aeolus (X-Band)
- Biomass (X-Band)
- CRISTAL (X-Band, no CFDP encapsulation)
- EarthCARE (S-Band and X-Band)
- FLEX (X-Band)
- MetOp-SG-A (Ka-Band)
- MetOp-SG-B (Ka-Band)
- MTG (Ka-Band)
- Sentinel-1 (X-Band)
- Sentinel-2 (X-Band)
- Sentinel-3 (X-Band)
- Sentinel-4 (Ka-Band)
- Sentinel-5 (X-Band)
- Sentinel-5P (X-Band)
- Sentinel-6 (X-Band)
- Seosat (X-Band)
- SMOS (S-Band and X-Band)
- Swarm (S-Band)

The user is notified about the availability of mission configuration files for new missions or about updates to the existing missions when starting-up S2G or through the “Help—>Check for Updates” menu option.

- Note that *schema versions available under the ‘Check for updates’ mechanism are only compatible with S2G v2.5.2 and above. Similarly, older schema versions will not work in S2G v2.5.2.* For details about the format changes, see Annex 3 in Mission Specification Schemas document: [S2G Mission Specification Schemas S2G-DME-TEC-SUM092-1D.pdf](#)

Latest versions of the mission schema files are also available at [MISSION SCHEMA FILES](#).

Note that it is possible for the users to include additional data type definitions in the default mission schema files delivered with the S2G application. This

may be typically the case for dedicated ISP data definitions. The [S2G Helpdesk](#) can include the user extensions as part of the default schemas distributed with the application and guide users in the customisation process. Please send your requests (together with the extended schemas files) to the [S2G Helpdesk](#).

## Known Problems

The current S2G release has the following open issues:

- *CFDP data: Support WARNING file status (overlapping PDUs) (S2G-AN-295)*

## Further Information

For more details, please have a look to the S2G User Manual: [S2G User Manual S2G-DME-TEC-SUM023-1K.pdf](#)

## Contact

For questions, suggestions or reporting issues, please send an e-mail to the S2G Helpdesk:

*s2g@eopp.esa.int*